

## DPX-19x-JJ

Diplexer | 380-960 MHz/1695-2700 MHz | Single and Twin Units | Indoor / Outdoor

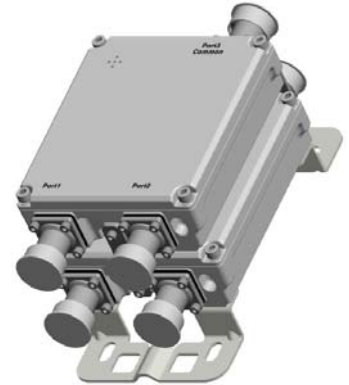
- Combines the 380-960 MHz and 1695-2700 MHz bands into a single output
- Usable at the BTS or antenna end
- Built in lightning protection on all ports
- Available as single or twin unit, with various DC/AISG bypass configurations
- Suitable for indoor or outdoor applications
- Pole or wall mounting

Ordering Options	Single Unit		Twin Unit	
	7/16-DIN Female Long Neck Connectors	4.3-10 Female Long Neck Connectors	7/16-DIN Female Long Neck Connectors	4.3-10 Female Long Neck Connectors

When ordering replace "x" with correct option for bypass configuration and single or twin unit.

DC/AISG bypass low band	DPX-196-JJ	DPX-196-JJ-43F	DPX-197-JJ	DPX-197-JJ-43F
DC/AISG bypass high band	DPX-194-JJ	DPX-194-JJ-43F	DPX-195-JJ	DPX-195-JJ-43F
Full DC/AISG bypass	DPX-192-JJ	DPX-192-JJ-43F	DPX-193-JJ	DPX-193-JJ-43F
No DC/AISG bypass	DPX-190-JJ	DPX-190-JJ-43F	DPX-191-JJ	DPX-191-JJ-43F

Electrical Characteristics	
<b>380-960 MHz Channel (Low Band)</b>	
Frequency Band	380-960 MHz
Insertion Loss	< 0.15 dB
Isolation	> 50 dB
VSWR	< 1.2
Continuous Average Power	< 500 W
IM3, 2x43 dBm	< -117 dBm
<b>1695-2700 MHz Channel (High Band)</b>	
Frequency Band	1695-2700 MHz
Insertion Loss	< 0.25 dB
Isolation	> 50 dB
VSWR	< 1.2
Continuous Average Power	< 500 W
IM3, 2x43 dBm	< -117 dBm
<b>DC/AISG Transparency</b>	
Bypass	2500 mA (max)
<b>Environmental</b>	
Temperature Range	-40° to +65° C      -40° to +149° F
Ingress Protection	IP67
Lightning Protection	10 kA 8/20 μs
Application	Indoor / Outdoor



Quoted performance parameters are provided to offer typical, peak or range values only and may vary as a result of normal testing, manufacturing and operational conditions. Extreme operational conditions and/or stress on structural supports is beyond our control. Such conditions may result in damage to this product. Improvements to products may be made without notice.

## DPX-19x-JJ

Diplexer | 380-960 MHz/1695-2700 MHz | Single and Twin Units | Indoor / Outdoor

Mechanical Characteristics			
Connectors		7/16-DIN Female or 4.3-10 Female	
Dimensions (H x W x D) Without Connectors or Mounting Brackets	Single Unit	162.5 x 140 x 48.5 mm	6.4 x 5.5 x 1.9 in
	Twin Unit	162.5 x 140 x 103 mm	6.4 x 5.5 x 4.1 in
Weight	Single Unit	2.5 kg	5.5 lbs
	Twin Unit	4.6 kg	10.1 lbs
Packing Dimensions	Single Unit	325 x 207 x 150 mm	12.8 x 8.1 x 5.9 in
	Twin Unit	325 x 207 x 214 mm	12.8 x 8.1 x 8.4 in
Mounting Options		Description	
Pole / Wall Bracket (included)		Attach to pole diameter Ø40-Ø135 mm (Ø1.57-Ø5.3 in)	

Quoted performance parameters are provided to offer typical, peak or range values only and may vary as a result of normal testing, manufacturing and operational conditions. Extreme operational conditions and/or stress on structural supports is beyond our control. Such conditions may result in damage to this product. Improvements to products may be made without notice.