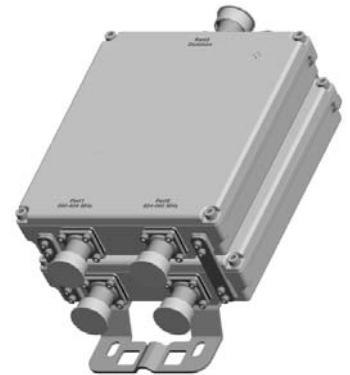


DPX-24x-JJ

Diplexer | 700/850+900 | Single and Twin Units | Indoor / Outdoor

- Combines the 700 and 850+900 bands into a single output
- Usable at the BTS or antenna end
- Built in lightning protection on all ports
- Available as single or twin unit, with various DC/AISG bypass configurations
- Suitable for indoor or outdoor applications
- Pole or wall mounting



Ordering Options	Single Unit		Twin Unit	
	7/16-DIN Female Connectors	4.3-10 Female Connectors	7/16-DIN Female Connectors	4.3-10 Female Connectors

When ordering replace "x" with correct option for bypass configuration and single or twin unit.

DC/AISG bypass 700 low band	DPX-246-JJ	DPX-246-JJ-43F	DPX-247-JJ	DPX-247-JJ-43F
DC/AISG bypass 850+900 high band	DPX-244-JJ	DPX-244-JJ-43F	DPX-245-JJ	DPX-245-JJ-43F
Full DC/AISG bypass	DPX-242-JJ	DPX-242-JJ-43F	DPX-243-JJ	DPX-243-JJ-43F

Electrical Characteristics	
700 Channel (Low Band)	
Frequency Band	690-806 MHz
Insertion Loss	< 0.5 dB; 0.3 dB typical
Isolation	> 45 dB
VSWR	< 1.25
Continuous Average Power	< 200 W
IM3, 2x43 dBm	< -117 dBm
850+900 Channel (High Band)	
Frequency Band	824-960 MHz
Insertion Loss	< 0.5 dB; 0.3 dB typical
Isolation	> 45 dB (> 50 dB with 7/16-DIN Connectors)
VSWR	< 1.25
Continuous Average Power	< 200 W
IM3, 2x43 dBm	< -117 dBm
DC/AISG Transparency	
Bypass Rating	2500 mA (max)
Environmental	
Temperature Range	-40° to +65° C -40° to +149° F
Ingress Protection	IP67
Lightning Protection	10 kA 8/20 μs
Application	Indoor / Outdoor

Quoted performance parameters are provided to offer typical, peak or range values only and may vary as a result of normal testing, manufacturing and operational conditions. Extreme operational conditions and/or stress on structural supports is beyond our control. Such conditions may result in damage to this product. Improvements to products may be made without notice.

DPX-24x-JJ

Diplexer | 700/850+900 | Single and Twin Units | Indoor / Outdoor

Mechanical Characteristics			
Connectors		4.3-10 Female Long Neck or 7/16-DIN Female Long Neck	
Dimensions (H x W x D) Without Connectors or Mounting Brackets	Single Unit	207 x 171 x 53.5 mm	8.1 x 6.7 x 2.1 in
	Twin Unit	207 x 171 x 113 mm	8.1 x 6.7 x 4.4 in
Weight	Single Unit	3.1 kg	6.8 lbs
	Twin Unit	6.3 kg	13.9 lbs
Packing Dimensions	Single Unit	385 x 310 x 210 mm	15.2 x 12.2 x 8.3 in
	Twin Unit	385 x 310 x 270 mm	15.2 x 12.2 x 10.6 in
Mounting Options		Description	
Pole / Wall Bracket (included)		Attach to pole diameter Ø40-Ø135 mm (Ø1.57-Ø5.3 in)	

Quoted performance parameters are provided to offer typical, peak or range values only and may vary as a result of normal testing, manufacturing and operational conditions. Extreme operational conditions and/or stress on structural supports is beyond our control. Such conditions may result in damage to this product. Improvements to products may be made without notice.