

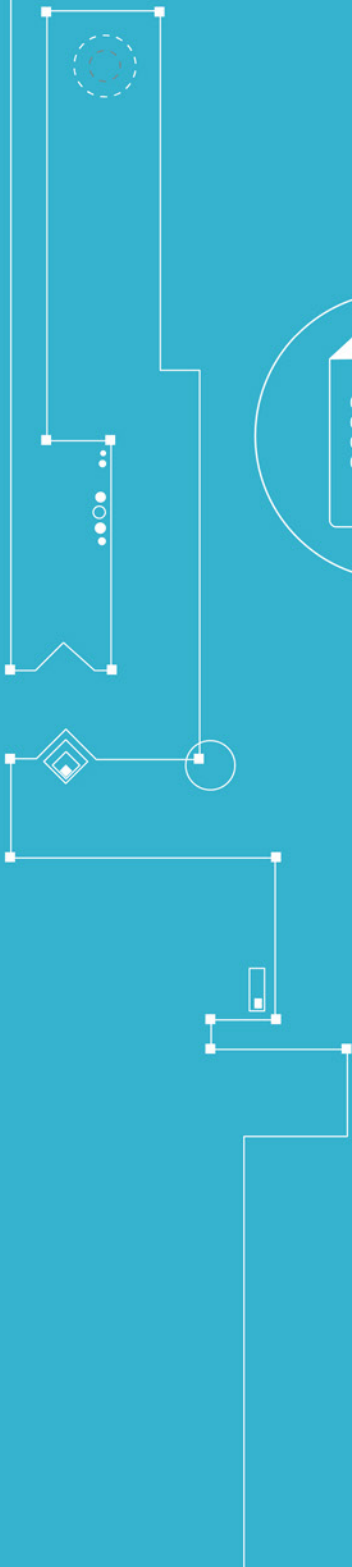


CUBRO
NETWORK VISIBILITY

CUBRO 10/100 COPPER TAP



DATA SHEET



Network TAP At a glance

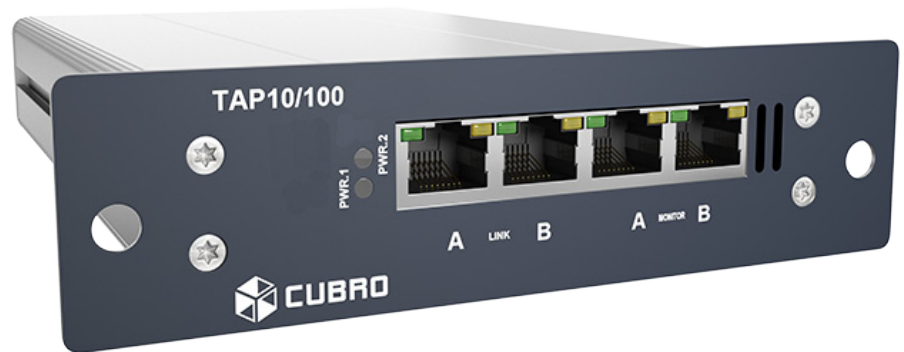
Definition

A network TAP (test access point) is an external monitoring device that mirrors the traffic that passes between two network nodes. A TAP is a hardware device inserted at a specific point in the network to monitor data.

Advantages of Copper TAP

- Provides complete traffic visibility and access to any network connection
- Transparent access
- Transfers all network traffic, including errors to the monitoring tools
- Easy operation and installation
- No PC or software necessary
- No bugs, no software updates means more time for your business
- LEDs on the front panel indicates power link and activity status

Product Review



The Cubro fast ethernet 10/100 Copper TAP provides passive monitoring access to a single full-duplex network. The copper network TAP provides the highest performing and most cost-effective access to devices for passively monitoring your network. The TAP has 100 % throughput, very low delay and fully transparent, even for layer 1 and layer 2 faults.

The copper TAP, intended for permanent installation in the entire network, allows the user to plug and play multiple monitoring devices without disrupting the existing network connection. Additionally, the TAP provides an invaluable frontline of defence by preventing the monitoring device from being seen or hacked by intruders. Designed to maintain network connectivity during power loss, this TAP also consistently delivers zero data loss while replicating network traffic to the monitoring ports for cable lengths of up to the 100m IEEE 802.3 specification limit.

Functions / Benefits:

- Link Forwarding - Each side of the link will be forward to a designated output port
- Jumbo Frame Support - The Cubro Aggregation TAP supports jumbo Ethernet frames with a size of up to 9000 Bytes.
- LINKSAVE Function - Special LINKSAVE Function enables secure Network Links even if the power supply fails. So the TAP does not influence the network, even if it is not powered.

Product Capabilities / Features

Network Port Connector	RJ45
Monitor Port Connector	RJ45
Network Port Link Speed	Supports 10M and 100M (fully passive connection; TAP doesn't influence link speed)
Monitor Port Speed	Supports 10M and 100M (fully passive connection; TAP doesn't influence link speed)
Number of Monitor Ports	2 separated for each direction
Storage Temperature	-10°C to 75°C
Operating Temperature	0 to 55°C
Operating Humidity	80% maximum relative humidity
Physical Dimensions (W x D x H)	3 x 11,2 x 17 cm 1,8 x 4,4 x 6,7 in
Housing type	Portable
Power Rating	5W
Power Supply	12 V DC
Weight	0,4kg

All Cubro TAPs can be combined to realise large monitoring solutions. Especially, with the network packet brokers in the middle, it is possible to monitor several hundred ports with one solution.



01001011101
00010010001
00100100001
01001001010

Ordering Information

Product Type & Number	Description
CBR.TAP-10/100-B-R3	10/100 TAP, 1 Link, 1/3 19" rackmount housing (rackmount kit not included)
CBR.PS-12	Power supply AC/DC 240V AC-85V AC to 12V DC
CBR.RM19-3	Cubro 19" Rackmount Kit for 3x 1/3 19" units

For more information please check our website www.cubro.com