




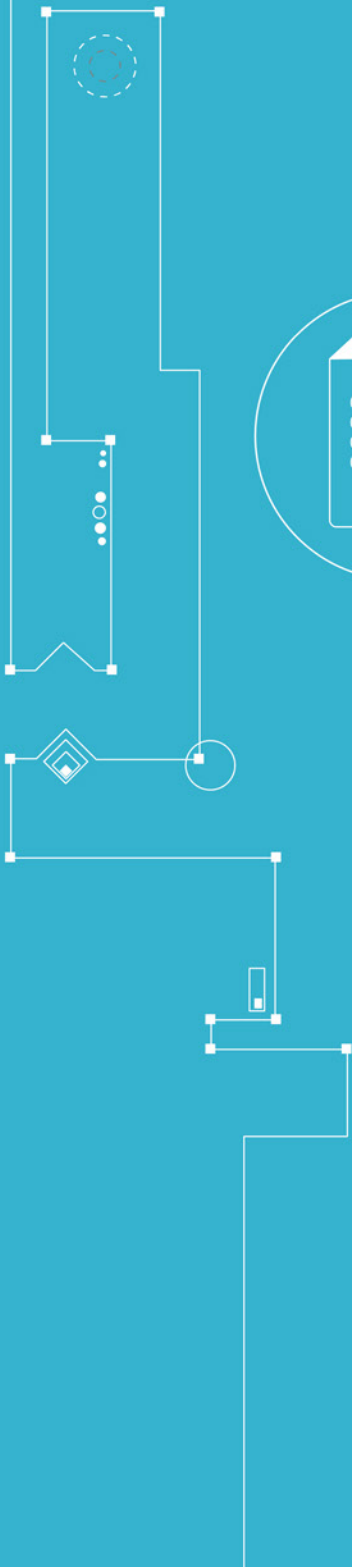
CUBRO
NETWORK VISIBILITY

FLEX TAP T100



```
01001011101
00010010001
00100100001
01001001010
```

DATA SHEET



Network TAP At a glance

Definition

A network TAP (test access point) is an external monitoring device that mirrors the traffic that passes between two network nodes. A TAP is a hardware device inserted at a specific point in the network to monitor data.

Advantages of FlexTAP T-100

- Provides complete traffic visibility and access to any network connection
- Transparent access
- Transfers all network traffic, including errors, to the monitoring tools
- Extra uptime protection makes the TAP more reliable
- PoE Transparent

Product Overview



Cubro FlexTAP T-100 provides a copy of the packets (which are running through the data link) at the monitor outputs. The FlexTAP monitors the data link traffic anytime without any interruptions (to the data link). Further, a FlexTAP can be used to analyse “real traffic” in data links under real life (e.g. full load) conditions at any time it is desired or necessary.

Functions / Benefits:

An outstanding characteristic of Cubro TAPs is the ‘linksafe’ design. The ‘linksafe’ design comprises many individual measures to ensure the data link integrity. The data link integrity is ensured not only under common failure situations like power failure but also under extreme failure conditions like internal defects of the TAPs electronic components. The data link is protected even from hardware failures inside the TAP via multiple redundant protection schemes. Internally the data link is passively tapped using a very small set of extremely reliable components. This ensures an exceptional low link failure rate under all conditions since this is the most important feature of a TAP.

Product Capabilities / Features

Tapping 10/100/1000 Ethernet links (RJ 45)	One link to two outputs
Fault Propagation	If the link on the input port is going down the output ports will follow with a short delay.
LED Indicators	Status, link, speed
Power	48V DC power card (Redundancy possibility)
Propagation Delay (In to Out)	< 1 ns
MTBF	778768 hours
Operating Temperature	0 to 55°C
Operating Humidity	80% maximum relative humidity
Physical Dimensions (H x W x D)	2,3 x 13,3 x 20 cm (0,9 x 5,2 x 7,8 in)
Rugged Aluminum Housing	19 inch rack, 3U with backplane.

Ordering Information

Product Type & Number	Description
CBR.FLEX-T100	Flexsystem 100Base-T TAP, 1 Link
CBR.FLEX-PS-48	Power supply Card 48V DC for FlexTAP
CBR.PS-48-FLEX	External 230V AC to the 48V DC power supply for the FlexTAP system
CBR.FLEX-RM3A-V	Flexsystem Active Rackmount Kit for 19 FlexTAP, 19", 3U height, fan and power 48V DC supply module included

For more information please check our website www.cubro.com.