

# Narada

stored energy solutions for a demanding world

## 12NPL100

The Narada Telecom Pure Lead range of VRLA batteries are well suited to provide battery backup in outdoor application long duration or outside plant application.

All Narada Telecom series batteries use CCPP plate technology and a patented post design offering exceptional service life.



### Technical Features:

- ◆ Flame Retardant ABS Cover and Container, UL94 V-0, LOI>28%
- ◆ Patented copper alloy terminal design
- ◆ Epoxy TPS design for high reliability post seal
- ◆ 12 months of storage at 68°F (20°C)
- ◆ Initial capacity at 100%
- ◆ Low pressure one-way flame arresting valve(s) UL1989
- ◆ Absorbent Glass Mat (AGM) Sealed Technology, Recombination efficiency of 99.9%

### Compliance and Safety:

- **ISO 9001:2000 and ISO 14001:2004 certified facilities**
- UL Recognized Component 924, for use in or with listed UL1778, UL1989 and UL924 systems
- IEC60896-21/22 / BS6290 part 4
- Certified to NEBS Version 8, Level 3
- Telcordia GR-1089-CORE, Issue 6
- Telcordia GR-63-CORE, Issue 4
- **Manufactured under system ISO9001(TUV)**
- Battery installation compliant with: EN 50272-2 or local equivalents
- NEBS Earthquake Risk Seismic Zone 4 Compliant

### Transportation:

- ◆ Classified as Nonspillable UN 2800 and meet the Nonspillable criteria listed in DOT-CFR Title 49, 171-189 (d) (3) (i) and (ii) and exempt from CFR 49, Subchapter C requirements
- ◆ Meets transportation conditions of IMDG exemption 238, IATA/ICAO Special Provision A67 (Not Restricted)

Ah @ 8hr 1.75 vpc / 77°F (25°C)	96 Ah
Ah @ 10hr 1.80 vpc / 77°F (25°C)	101 Ah

Nominal Voltage	12V
Float Charge Voltage @25°C (2.23 – 2.27vpc)	13.4 – 13.6
Max. Charge Current (A) (5 hour rate @ 1.75vpc)	25 Amps

Electrolyte Absorbed H <sub>2</sub> SO <sub>4</sub>	1.300
--	-------

Short Circuit Current (A)	2318 Amps
Internal Resistance (mΩ)	5.47

Terminal Type	Torque
M6-M (Front L Bracket)	78 in-lbs (8 ±1 Nm)
M6-F (Top Insert)	78 in-lbs (8 ±1 Nm)

Dimension	in	mm
Length	15.55	395
Length Base	14.49	368
Width	4.25	108
Overall Height	11.30	287

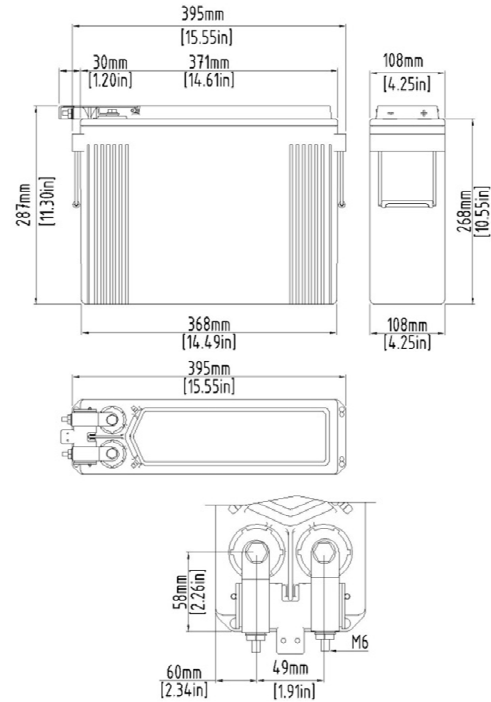
	Lbs.	Kg
Weight	69	31.20

CLEI	PBMYAGBSRA	CPR	217341
------	------------	-----	--------

NPL-Series

## Operating Parameters

Float Charging Voltage	13.5V / 2.25vpc @ 77°F (25°C)
Equalize /Cycle	14.0V – 14.3V 2.33Vpc to 2.38Vpc @ 77°F (25°C)
See Operations and Maintenance Manual for specific guidelines and recharge times	
Charging Temperature Compensation	-2 mV/cell/°F > 77°F (-3.6 mV/cell /°C > 25°C)
	+2 mV/cell/°F < 77°F (+3.6 mV/cell/°C < 25°C)
Maximum AC Ripple (Charger)	0.5% RMS, 1.5% peak-to-peak for float charge voltage for best results
Operating Temperature Range	
Nominal	+74°F (24°C) to 80°F (27°C)
Charge	-20°F (-28°C) to +122°F (50°C)
Discharge	-40°F (-40°C) to +140°F (60°C)
Storage Temperature Range	-4°F (-20°C) to +104°F (40°C)



Constant Current Discharge (Amps) @ 77°F/25°C															
End vpc	5m	15m	30m	45m	1h	2h	3h	4h	5h	6h	8h	10h	12h	20h	24h
1.67	333	186	118	87.1	69.8	39.8	28.3	22.1	18.2	15.6	12.1	10.3	8.76	5.65	4.82
1.70	325	184	117	86.5	69.4	39.6	28.1	21.9	18.1	15.5	12.1	10.3	8.71	5.62	4.82
1.75	308	179	115	85.3	68.5	39.2	27.8	21.7	17.9	15.3	12.0	10.2	8.66	5.61	4.81
1.80	279	171	111	83.1	66.9	38.4	27.3	21.4	17.7	15.1	11.8	10.1	8.61	5.57	4.80
1.83	260	163	107	80.6	65.1	37.7	26.9	21.1	17.5	15.0	11.7	9.95	8.52	5.56	4.79
1.85	249	157	104	78.7	63.7	37.1	26.6	20.9	17.3	14.8	11.6	9.85	8.42	5.49	4.72
1.86	244	154	102	77.7	63.0	36.8	26.5	20.8	17.2	14.7	11.5	9.80	8.37	5.45	4.69

Constant Power Discharge (Watt/Cell) @ 77°F/25°C															
End vpc	5m	15m	30m	45m	1h	2h	3h	4h	5h	6h	8h	10h	12h	20h	24h
1.67	590	351	227	171	138	79.8	57.0	44.6	36.8	31.5	24.4	20.7	17.7	11.4	9.70
1.70	583	348	225	170	138	79.6	56.9	44.5	36.8	31.4	24.4	20.7	17.7	11.3	9.63
1.75	562	338	221	167	136	79.0	56.5	44.3	36.6	31.2	24.2	20.5	17.5	11.1	9.43
1.80	523	323	214	163	133	77.8	55.9	43.8	36.2	30.9	24.0	20.3	17.3	11.0	9.26
1.83	492	310	207	159	130	76.7	55.3	43.4	35.9	30.7	23.8	20.2	17.1	10.8	9.14
1.85	470	298	202	155	127	75.5	54.4	42.8	35.4	30.2	23.4	19.8	16.8	10.6	8.89
1.86	459	293	199	153	125	74.9	53.9	42.5	35.1	29.9	23.2	19.6	16.6	10.5	8.77

China: **Narada**  
 NARADA POWER SOURCE CO.,LTD.  
 No.459 Wensan Road, Hangzhou, Zhejiang, P.R.China  
 Tel:+86-571-28827013 Fax:+86-571-85126942  
 Website:www.en.naradabattery.com E-mail: intl@narada.biz

**MPI Narada** MPI-Narada  
 44 Oak St  
 Newton, MA 02464  
 Tel: 800-982-4339  
 sales@naradausa.com www.naradausa.com

